

Industrial Products Catalog

Tank Valves



Schrader International core competencies include high volume precision machining, assembly and testing of fluid control devices.

Since developing the first pneumatic valve core over 150 years ago, Schrader has been at the forefront of innovation in our industry.

Schrader Firsts

- Primary Seal A/C Charge Valve
- Mini PRV A/C Pressure Relief Valve
- Positive Stop Valve Core

Through the latest in fuel system and tire pressure monitoring technology, Schrader leads the way in fluid control device innovation.

- Multi-spindle screw machining
- Automated assembly and testing on specialized equipment to assure reliable product, every time.
- Fully equipped design and validation test laboratory
- Fully functional CAD system, compatible with most CAD systems
- TS16949, ISO 9002, ISO 1400 Certified

Demand an authentic Schrader valve built by the company that set the quality standard for tank valves more than 50 years ago. Our valves are reliable, making us the industry leader in performance.

Schrader's experienced product development staff provides unique solutions for unique applications. Schrader can meet requirements and specifications for performance, size-weight, and cost, whether it is a single component, sub assembly or module.

Existing Tank Valve applications cover many and varied uses from telecommunications to water storage. Schrader Tank Valves fit your application dependably and economically.

Don't see a combination you need? Contact Schrader or your nearest Schrader Distributor.

Applications

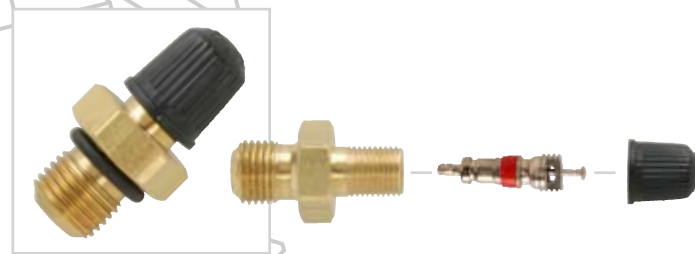
Water Storage

Air Bladder Applications

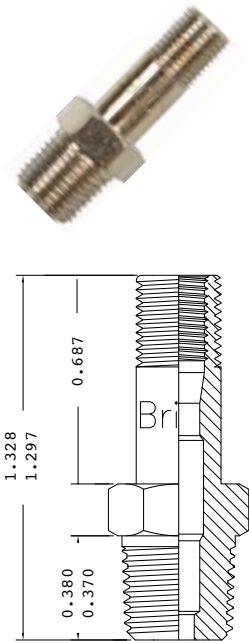
Telecommunications

Bicycle Suspension Systems

Multiple Fluids Compatibility

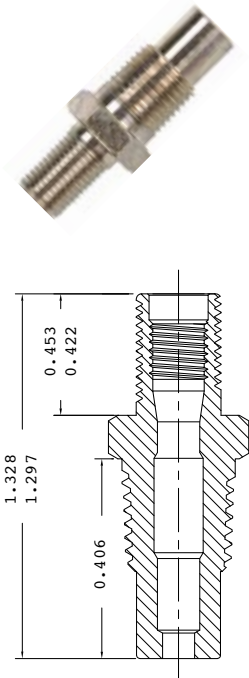


Schrader International, Inc. reserves the right to change any of the following specifications without notice. This document is meant to be used as reference only. For more specific information, or information regarding cores not listed here, please contact Schrader International, Inc.



900 Series Tank Valves Cap Thread .305-32 Tank Thread 1/8" NPT

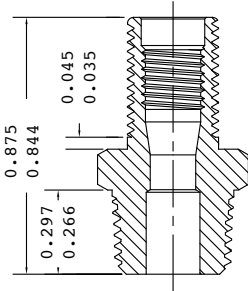
| Part Number | Valve Core | Cap | Finish | Application | Remarks |
|-------------|------------|-------|--------|---------------|---|
| 3890000047 | 1566 | 7 | Nickel | Low Pressure | |
| 3890000424 | 5405 | 772 | Brass | Std Air | |
| 3890010047 | 4575 | 600NP | Nickel | Low Pressure | |
| 3890011075 | 5405 | 772 | Nickel | Std Air | Loctite on pipe thds |
| 3890030075 | 5405 | | Nickel | Std Air | |
| 3890060075 | 5405 | 772 | Nickel | Std Air | |
| 3890080075 | 1566 | | Nickel | Low Pressure | |
| 8090000070 | 5405 | 600NP | Nickel | Std Air | |
| 8090001447 | 1566 | 600NP | Nickel | Low Pressure | |
| 8090001547 | 9914 | | Nickel | High Pressure | |
| 8090001647 | 1566 | | Nickel | Low Pressure | |
| 8090001747 | 9914 | 2525 | Nickel | High Pressure | |
| 8090001947 | 6035 | 713 | Nickel | High Temp Air | |
| 8090010070 | | | Nickel | | Body Only |
| 8090030075 | 5405 | 7 | Nickel | Std Air | |
| 8090040047 | 397T | | Brass | Water | Pull Core for Water Systems and Humidifiers |
| 8090050047 | 5405 | 7 | Brass | Std Air | |
| 8090051047 | 805-88 | 600NP | Nickel | A/C | Springless Core |



901 Series Tank Valves Cap Thread .305-32 Tank Thread 1/8" NPT

| Part Number | Valve Core | Cap | Finish | Application | Remarks |
|-------------|------------|-------|--------|---------------|---------|
| 8090113047 | 805-7 | | Nickel | A/C | |
| 8090120070 | 5405 | 600NP | Nickel | Std Air | |
| 8090160047 | 1566 | | Nickel | Low Pressure | |
| 8090180047 | 9914 | 2525 | Nickel | High Pressure | |
| 8090112047 | 5405 | 772 | Nickel | Std Air | |

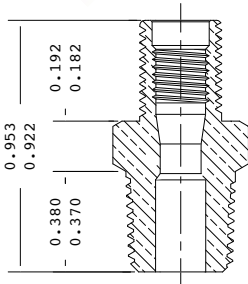
Tank Valves



904 Series Tank Valves

Cap Thread .305-32 Tank Thread 1/8" NPT

| Part Number | Valve Core | Cap | Finish | Application | Remarks |
|-------------|------------|-------|--------|---------------|-------------------|
| 8090400070 | | | Nickel | | Body Only |
| 8090400947 | 5405 | 7612 | Nickel | Std Air | |
| 8090401047 | 9914 | 2525 | Nickel | High Pressure | |
| 8090401247 | 1566 | 600 | Nickel | Low Pressure | |
| 8090401347 | 5405 | 2316C | Nickel | Std Air | |
| 8090401647 | 805-7 | 600NP | Nickel | A/C | |
| 8090401847 | 805-7 | 772 | Nickel | A/C | |
| 8090410075 | 5405 | | Nickel | Std Air | |
| 8090411075 | 5405 | 772 | Nickel | Std Air | |
| 8090413047 | 5405 | 7 | Nickel | Std Air | |
| 8090420075 | 807-2S | 772 | Nickel | Fuel | |
| 8090430047 | 9914 | 7612 | Nickel | High Pressure | |
| 8090440075 | 5405 | | Nickel | Std Air | #79 locknut incl. |
| 8090450047 | 5405 | 1155 | Nickel | Std Air | |
| 8090470075 | 807-2S | 7 | Nickel | Fuel | |
| 8090480070 | | | Brass | | Body Only |
| 8090490075 | 805-8 | 772 | Nickel | A/C | |



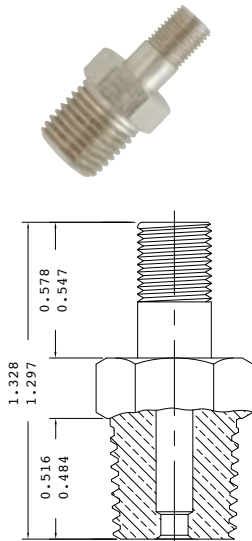
906 Series Tank Valves

Cap Thread .305-32 Tank Thread 1/4" NPT

| Part Number | Valve Core | Cap | Finish | Application | Remarks |
|-------------|------------|-------|--------|---------------|-------------------------|
| 3890600057 | 5405 | 772 | Brass | Std Air | |
| 3890600075 | | | Nickel | | Body Only |
| 3890620070 | 807-2S | 772 | Nickel | Fuel | |
| 3890640075 | 5405 | 772 | Nickel | Std Air | |
| 3890641075 | 5405 | 772 | Nickel | Std Air | Loctite on pipe threads |
| 3890642075 | 5405 | | Nickel | Std Air | Loctite on pipe threads |
| 3890650075 | 5405 | 7 | Brass | Std Air | |
| 3890670070 | 807-2S | 7 | Nickel | Fuel | Cap packed separately |
| 3890690070 | 807-2S | 772 | Nickel | Fuel | Cap packed separately |
| 8090601347 | 1566 | 7 | Nickel | Low Pressure | |
| 8090601447 | 9914 | 5998 | Nickel | High Pressure | |
| 8090601547 | 5405 | 600NP | Nickel | Std Air | |
| 8090601647 | 4575 | 772 | Nickel | Low Pressure | |
| 8090620075 | 5405 | 7 | Nickel | Std Air | |
| 8090630075 | 808 | 7 | Nickel | Fuel | Alternative Fuels |
| 8090650075 | 5405 | 772 | Nickel | Std Air | Cap packed separately |
| 8090670047 | | | Brass | | Body Only |
| 8090680047 | 805-8 | 772 | Nickel | A/C | |
| 8090690047 | 9914 | 772 | Nickel | High Pressure | |

560 Series Tank Valves

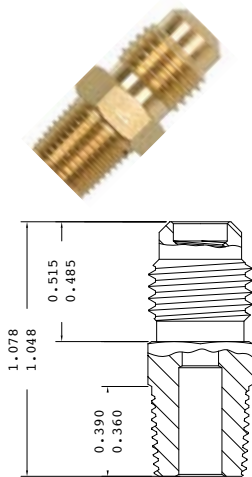
Cap Thread .305-32 Tank Thread 1/4" NPT



| Part Number | Valve Core | Cap | Finish | Application | Remarks |
|-------------|------------|-------|------------|---------------|-----------------------|
| 8056001147 | 6035 | 5998 | Bright Dip | High Temp Air | |
| 8056011047 | | | Bright Dip | | Body Only |
| 8056012047 | 805-8 | 772 | Bright Dip | A/C | |
| 8056013047 | 1566 | 7 | Bright Dip | Low Pressure | |
| 8056014047 | 1566 | 600 | Bright Dip | Low Pressure | |
| 8056015047 | 1566 | 2316 | Bright Dip | Low Pressure | |
| 8056016047 | 1566 | 600NP | Bright Dip | Low Pressure | |
| 8056017047 | 1566 | | Bright Dip | Low Pressure | |
| 8056020047 | 5405 | 600NP | Bright Dip | Std Air | |
| 8056021047 | 5405 | 772 | Brass | Std Air | |
| 8056030047 | 1566 | 772 | Nickel | Low Pressure | |
| 8056040047 | 5405 | 7 | Bright Dip | Std Air | |
| 8056050047 | 805-88 | 600NP | Brass | A/C | Springless valve core |
| 8056060047 | 805-7 | 600NP | Bright Dip | A/C | |
| 8056061047 | 9914 | 2525 | Bright Dip | High Pressure | |
| 8056062047 | 805-7 | 600 | Bright Dip | A/C | Black Onyx Cap |
| 8056080047 | 807-2S | 772 | Bright Dip | Fuel | |
| 8056090047 | 5405 | 772 | Bright Dip | Std Air | |

566 Series Tank Valves

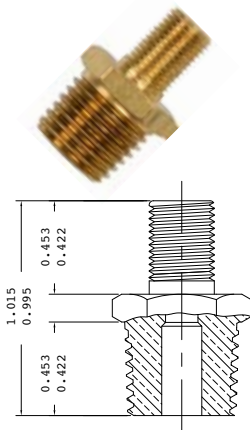
Cap Thread 7/16-20 UNF Tank Thread 1/8" NPT



| Part Number | Valve Core | Cap | Finish | Application | Remarks |
|-------------|------------|--------|------------|--------------|-------------------------|
| 8056610047 | 807-2S | 753 | Bright Dip | Fuel | |
| 8056611047 | 4575 | | Bright Dip | Low Pressure | |
| 8056611147 | 807-2S | 205235 | Bright Dip | Fuel | Nylon Refrigeration Cap |
| 8056612047 | 5405 | | Bright Dip | Std Air | |
| 8056620047 | 805-7 | | Bright Dip | A/C | |
| 8056622047 | 805-8 | 205240 | Bright Dip | | Nylon Refrigeration Cap |
| 8056640047 | 808 | 205240 | Nickel | Fuel | Nylon Refrigeration Cap |
| 8056650047 | 807-2S | 753 | Nickel | Fuel | |
| 8056670047 | | | Brass | | Body Only |
| 8056680047 | 5405 | 605 | Bright Dip | Std Air | |
| 8056683547 | 805-7 | 753 | Bright Dip | A/C | Loctite on pipe thds |
| 8056690047 | 807-2S | 205235 | Nickel | Fuel | Nylon Refrigeration Cap |

Tank Valves

557 Series Tank Valves Cap Thread .305-32 Tank Thread 1/4" NPT



| Part Number | Valve Core | Cap | Finish | Application | Remarks |
|-------------|------------|------|--------|---------------|---------|
| 8055700047 | 807-2 | 7 | Brass | Fuel | |
| 8055710047 | 807-2 | 600 | Brass | Fuel | |
| 8055720047 | 9914 | 2525 | Brass | High Pressure | |
| 8055730047 | 5405 | | Brass | Std Air | |

High Pressure Inflating Connectors

These high pressure inflating connections attach securely by hand or wrench to the valve cap threads of high pressure valves. They can be fitted to gauging and inflating devices by a variety of methods. Various angles permit easy attachment to hard-to-reach valves.



| Part Number | Generic Number | Thread Size | Air Line Connection | Max. Pressure (PSIG) | Configuration | Recommended Max. Torque to Valve Mouth* | Remarks |
|-------------|-----------------------------------|-------------|---|----------------------|---|---|--|
| 005560099 | 556 | .305"-32 | 1/8" NPT Male | 3,000 | Air line connection 90 to axis of valve | 50 in.-lb. | Has core depressor pin, copper sealing washer 02550080 |
| 027550169 | 2755 | .305"-32 | 3/8"-24 thread for 3/16" flare tube fitting, meets MS 33656E3 | 3,000 | Air line connection 90 to axis of valve | 50 in.-lb. | Has core depressor pin, copper sealing washer 027550080 |
| 027550008 | 2755 <small>Large Bore</small> | .485"-26 | 3/8"-24 thread for 3/16" flare tube fitting | 3,000 | Air line connection 90 to axis of valve | 50 in.-lb. | Has core depressor pin, copper sealing washer 027550080 |
| 050070099 | 5007 | .305"-32 | 7/16"-20 thread for 1/4" flare tube fitting, meets MS 33656E4 | 15,000 | Straight | 75 in.-lb. for steel valves | Copper sealing washer 027550080 |
| 061160001 | 6116 | .305"-32 | 1/8" NPT Female | 3,000 | Air line connection 70 to axis of valve | 30 in.-lb. | Hard fiber sealing washer 5/32" ID x 3/8" OD x 1/16" Thick |
| 057840099 | 5784 | .305"-32 | 7/16"-20 thread for 1/4" flare tube fitting, meets MS 33656E4 | 5,000 | Air line connection 70 to axis of valve | 30 in.-lb. | Hard fiber sealing washer 5/32" ID x 3/8" OD x 1/16" Thick |

* It may be necessary to replace the sealing washers after a number of uses to insure sealing on valve mouth

Available Cap Styles

Schrader provides a wide range of Caps to meet any application.

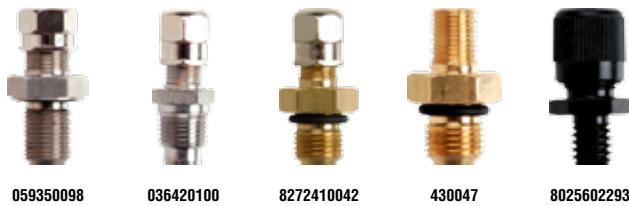


Valve Cores

Ask for more information to see full valve core selection.



Specialty Valves



| Part Number | Valve Core | Cap | Finish | Application | Remarks | Thread | Cap Thread |
|-------------|------------|-------|------------|---------------|------------------------------|-----------------|----------------|
| 059350098 | 2300 | 5934 | Brass | High Pressure | O-Ring, Shock Absorber Valve | 1/2-20 UNF-3A | .482-26 |
| 036420100 | 5405 | 7612 | Stainless | Std Air | With Filter | 1/8-27 NPT | .305-32 |
| 8114310094 | 805-8 | | Brass | A/C | O-Ring | 1/8-28 British | 7/16-20 UNF-2A |
| 8272410042 | 807-2 | 7 | Brass | Fuel | O-Ring (H1341 Housing) | M10x1 | .305-32 |
| 430047 | 806 | | Brass | Std Air | O-Ring (H1341 Housing) | M10x1 | .305-32 |
| 8025602293 | 807-2 | Nylon | Blk Chrome | Fuel | | 5/16-18 UNC-2A | 7/16-20 UNF-2A |
| 8030200047 | 5405 | | Aluminum | Std Air | O-Ring | 5/16-32 UNEF-2A | .305-32 |
| 8030210047 | 807-3 | | Aluminum | Fuel | O-Ring | 5/16-32 UNEF-2A | .305-32 |

Lead-free Tank Valve Assemblies

With recent legislation in several states tightening regulation of lead content in the components of potable (drinking) water systems, Schrader International has developed a line of tank valve assemblies that are compliant with NSF/ANSI Standard 61 Annex G, which limits assembly lead content to not more than 0.25% maximum of the wetted surfaces. These tank valve assemblies have been certified by U/L to meet the requirements of NSF/ANSI Standard 61 Annex G. Contact Schrader International for sizes and availability.



*205 Frazier Road
Altavista, VA 24517*

Tel: +1 434-369-4741

schrader-bridgeport.com

TANKVALVES-0411